



Aussie Pumps

Reliable Products ... Reliable People

AUSSIE GMP PUMPS

ELECTRIC DRIVE HIGH PRESSURE TRANSFER ... 3 YEAR PUMP WARRANTY

Heavy duty **cast iron**, **Ni Al bronze** and cast **316 stainless steel** electric drive pumps are designed for high pressure applications, available in a range of sizes from 1½" through to 3".

With flows up to 1250 litres per minute and maximum heads of 78 metres these pumps are powered by close coupled heavy duty, IP rated, two pole TEFC motors.

Features

- Close grained cast construction
- Open style impeller (except B-ZPMA version)
- Self primes from depths of 6 metres
- Replaceable suction port
- Close coupled to a heavy duty TEFC single or three phase electric drive motor rated
- Stainless steel motor shaft
- Simple pump design
- Carbon/Alumina seals standard, other seal options available
- Max temperature 70°C

They self prime from 6 metre depths making them ideal for any heavy duty industrial, mining or agricultural process pump duty.

Stainless steel pumps are corrosion and abrasion resistant and suitable for handling aggressive liquids.

Benefits

- » Long trouble free life
- » Passes small solids in suspension
- » Ready to pump in minimum amount of time
- » Easy to replace, easy access to check valve for servicing
- » Electric motor convenience, compact and requires minimal space. Motor can be easily disconnected without disconnecting pipework from pump.
- » Corrosion resistance
- » Low maintenance
- » Flexibility of handled liquids



3" G3TMK-A
semi trash version

Applications:

Cast Iron

- High pressure water transfer
- Boom spray
- Machinery wash down
- Spray irrigation
- Fire fighting
- Industrial process pumping

Ni Al bronze

- Bilge pump out
- Deck wash down
- Salvage pump
- Marine fire fighting



Cast 316 Stainless steel

- Aggressive water pumping
- Sewage handling
- Acid & solvent pumping
- Industrial food waste
- Ag chemical transfer
- AdBlue transfer



Specifications

Suct/Del port	Model	Motor	kW	IP rating	Total Head (m)	Max flow (l/m)	Solids size (mm)	Cast Iron CAT no.	NI AL Bronze CAT no.	Stainless steel CAT no.
2" x 2"	G2TMK-A	240v	2.2	54	33.5	375	5 (Bz: 8)	EAEL	EA9H	-
		415v						EADT	EA4R	EB85
		415v	3	54	34	400	8	EAT8	-	-
3" x 3"	G3TMK-A*	415v	4	55	35	800	8	EANC*	EAHS	-
		415v	5.5		40	910	10	EAND*	-	EACB/EALV
		415v	7.5		47	850	13	EANE*	EAHV	EABE/EALZ
		415v	11		54.4	1100	16	EANG*	EAFR	EACD
		415v	15		70	800	6	EANP	-	-
2" x 1½"	B1½ZPMA	415v	7.5	55	58.5	600	6	EANN	-	-
3" x 2"	B2ZPMA	415v	15	55	70	800	6	EANP	-	-
3" x 3"	B3ZPMA/ST*	415v	18.5	55	70	1250	14	EA9A*	EADV	-
		415v	22		78	1250	19	EA9B*	EARV	-

* Semi trash version with front opening clean out port & silicon carbide mech seal

Due to our program of continuous product development the manufacturer reserves the right to alter specifications without notice.

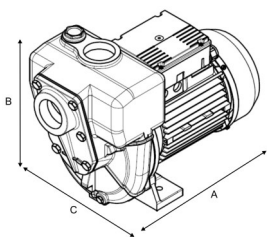


Aussie Pumps

Reliable Products ... Reliable People

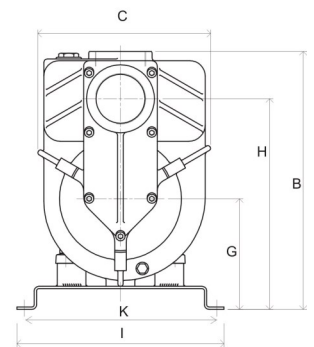
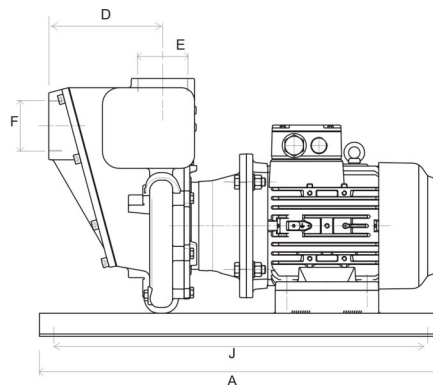
AUSSIE GMP PUMPS

ELECTRIC DRIVE HIGH PRESSURE TRANSFER ... 3 YEAR PUMP WARRANTY



Model		Length A (mm)	Height B (mm)	Width C (mm)
G2TMK-A	2.2kW	450	316	230
	3kW	450	316	230

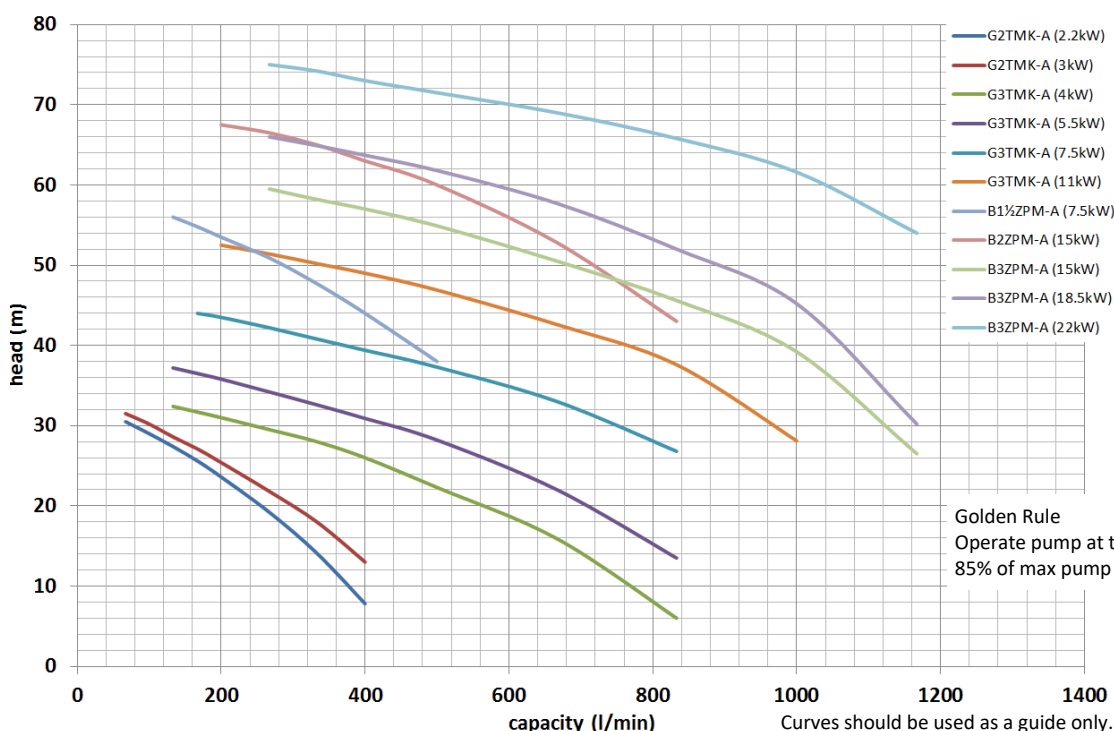
Model		Length A (mm)	Height B (mm)	Width C (mm)
G3TMK-A	4kW	700	450	360
	5kW, 7.5kW	790	467	360
	11kW	1000	505	470
B1½ZPMA	7.5kW	790	473.5	360
B2ZPMA	7.5kW	1000	510	740
B3ZPMA	18.5kW, 22kW	1000	530	470



Pumps 4kW & over are mounted on a base plate

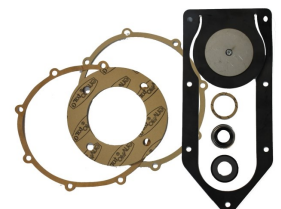
Full data sheet available for each pump ... contact Aussie Pumps

Performance Curves: 2900 rpm



Rejuvenation kits...

Contain gaskets, mech seal, counterface & complete check valve to make servicing these pumps a breeze.



Due to our program of continuous product development the manufacturer reserves the right to alter specifications without notice.